

Evidence for Public Policy

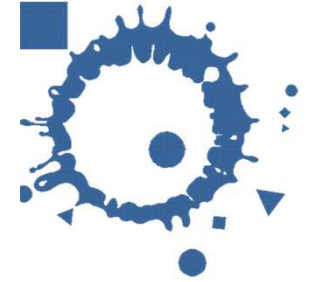
Data applications for disasters and civil conflicts

Debarati Guha-Sapir
Dept of Epidemiology, University of Louvain
Brussels, Belgium

WWW.CRED.BE



Centre for Research on the Epidemiology of Disasters

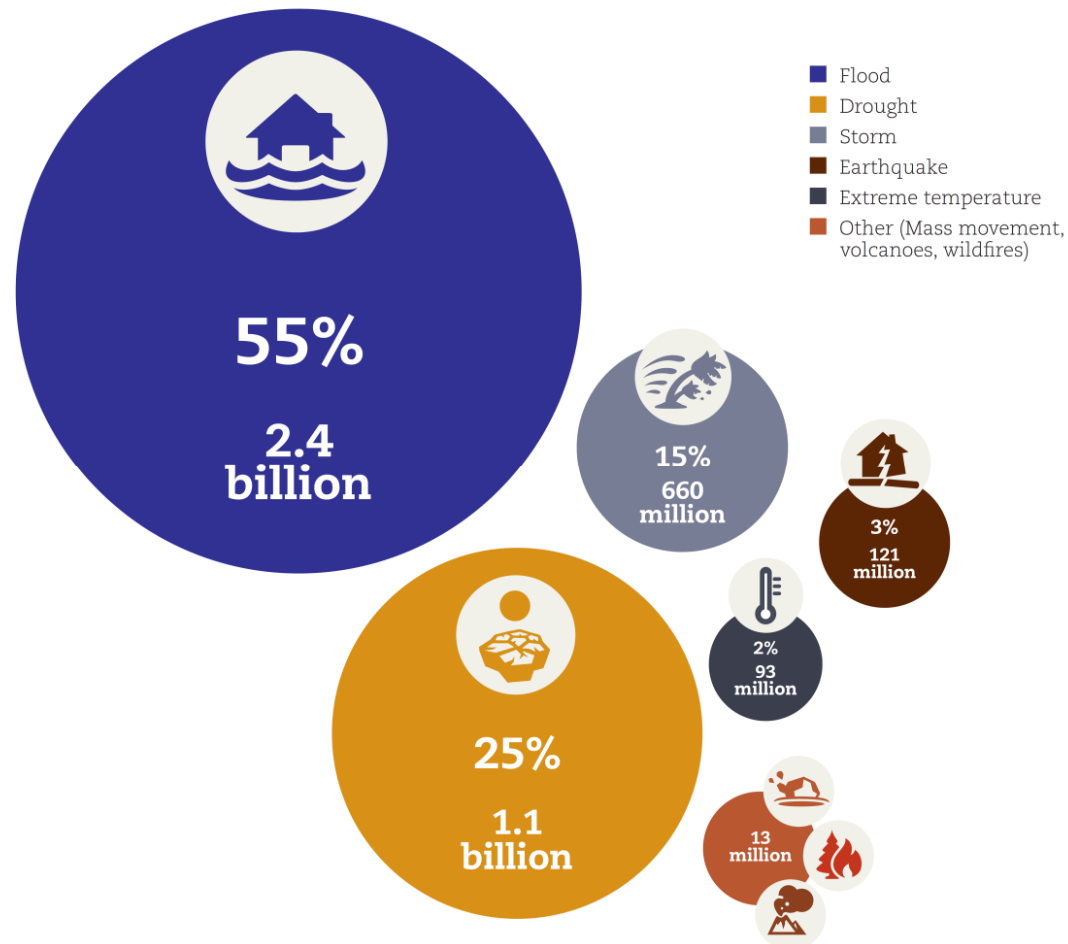


What I will address

- Data on human impact of Natural Disaster – EMDAT
 - Data on Conflict affected populations - CEDAT
-

- ✓ **Physical characteristics, human and economic losses natural disasters since 1980**
- ✓ **1900 – today and 184 countries**
- ✓ **Fixed inclusion criteria and definitions (with Munich Reinsurance)**
- ✓ **Geocodes of impact foot print (no public access)**
- ✓ **Regional hubs initiated**
- ✓ **Funded by: USAID/Belgian Government/EU)**

Numbers affected by disaster types 1994 - 2013



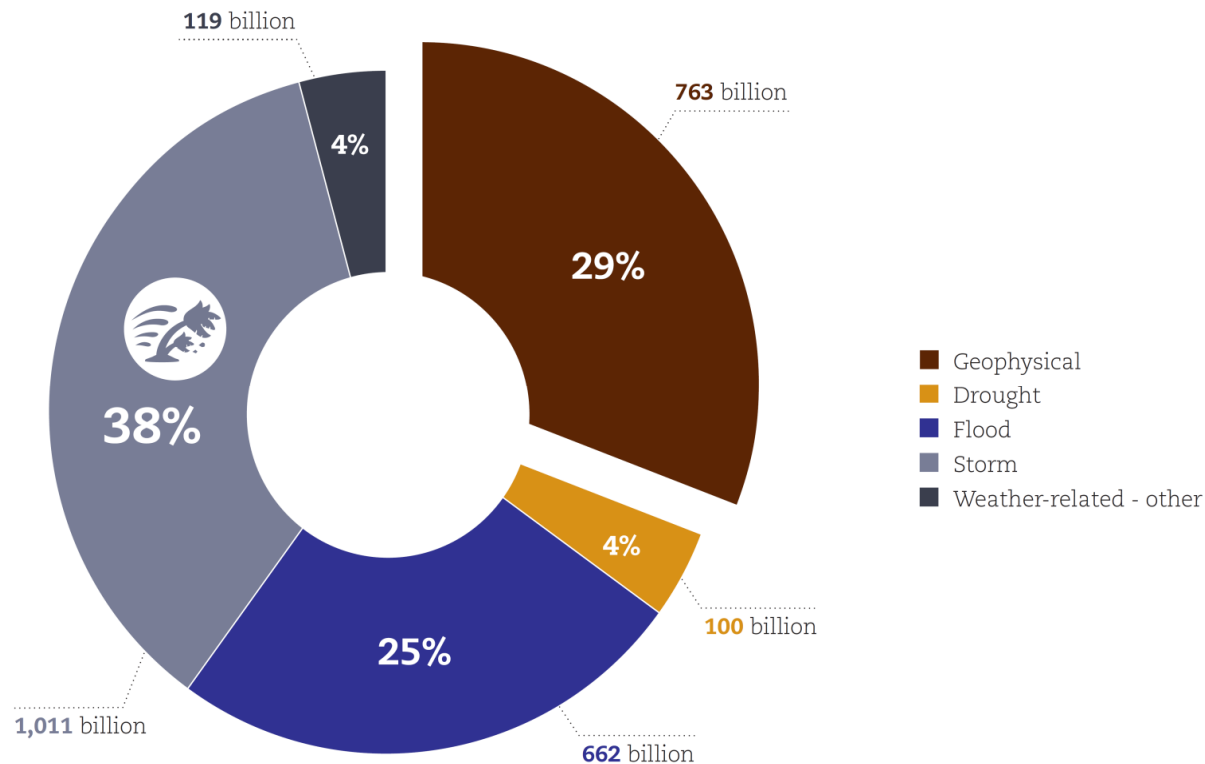
From: The Human Cost of Natural Disasters, http://emdat.be/human_cost_natdis



Centre for Research
on the Epidemiology
of Disasters
CRED

Economic damage by disaster 1995 - 2013

UCL
Université
catholique
de Louvain

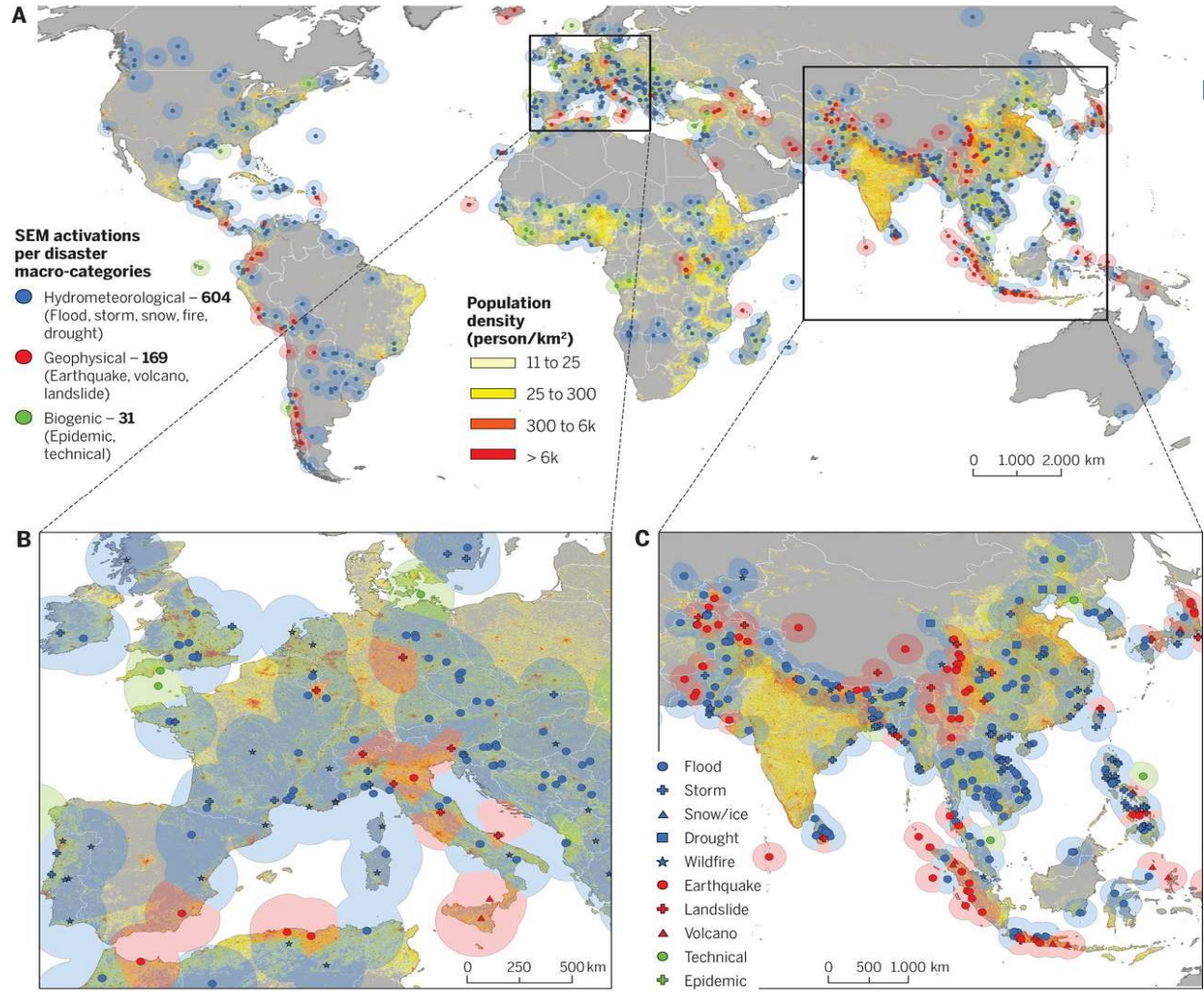
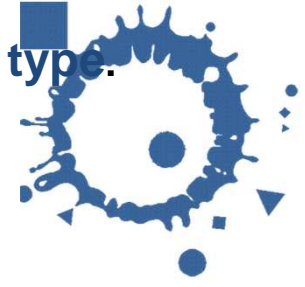


- Weather related disasters account for **70% of total losses;**
- **High asset values** in high-income countries pushed up their recorded losses
- **Human lives** not accounted for

Human Cost of Disasters, CRED Report, 2015, www.cred.be/humancost

Debby Guha-Sapir

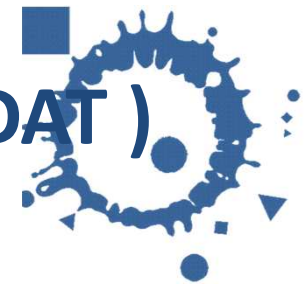
Fig. 2 Spatial distrib. of Sat. Emerg. Mapping activations by disaster type.



Stefan Voigt et al. Science 2016;353:247-252



Natural disasters in Egypt 1980 - today (EMDAT)

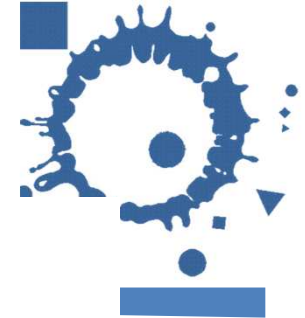


Disaster	No.	Deaths	Affected (tot)	Losses* (mill US\$)
Floods	9	669	168 498	232
Storms	6	119	32 849	130
Earthquakes	5	694	93 965	2 088
Cold & heat	4	167	171	?
Grand Total	24	1649	295 483	2 450

** Does not include value of lives lost*

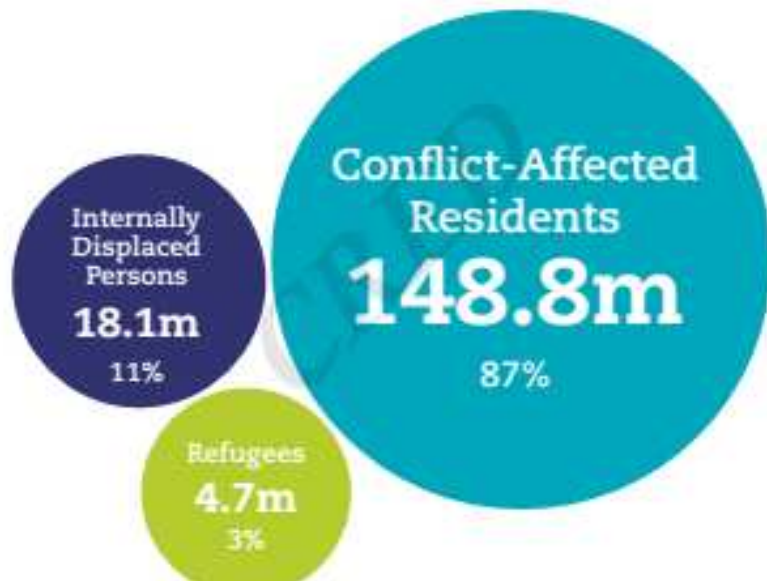
Data from fragile or insecure regions

(Data source: CEDAT)



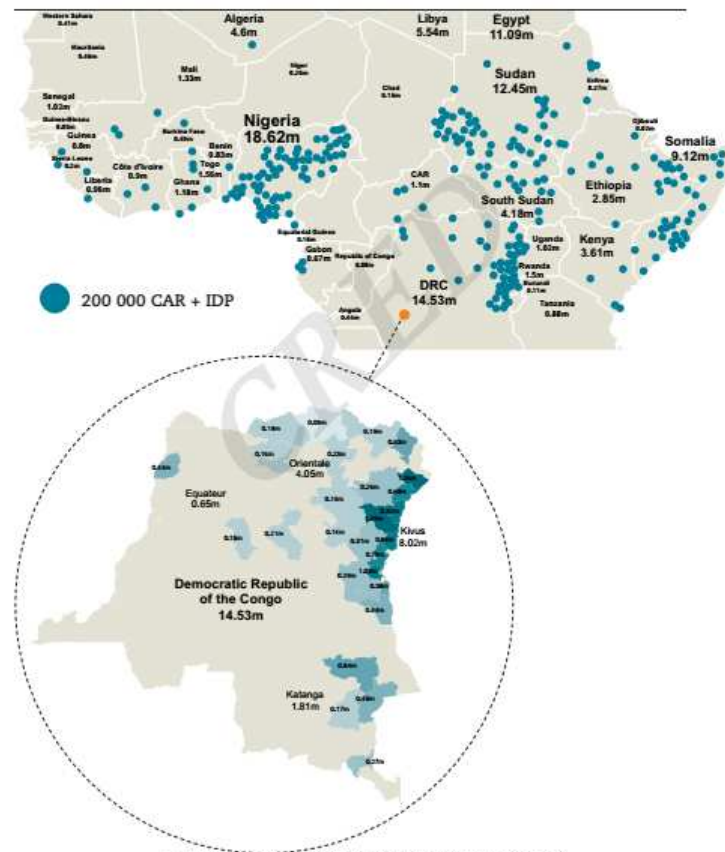
Where are people living in conflict in 2012?

Fig. 1.3
PAC by status in CE-DAT surveyed countries



From CRED, "People affected by conflict, Humanitarian needs in numbers", 2013

Fig. 1.4

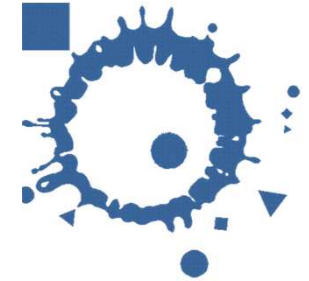


From CRED, "People affected by conflict, Humanitarian needs in numbers", 2013

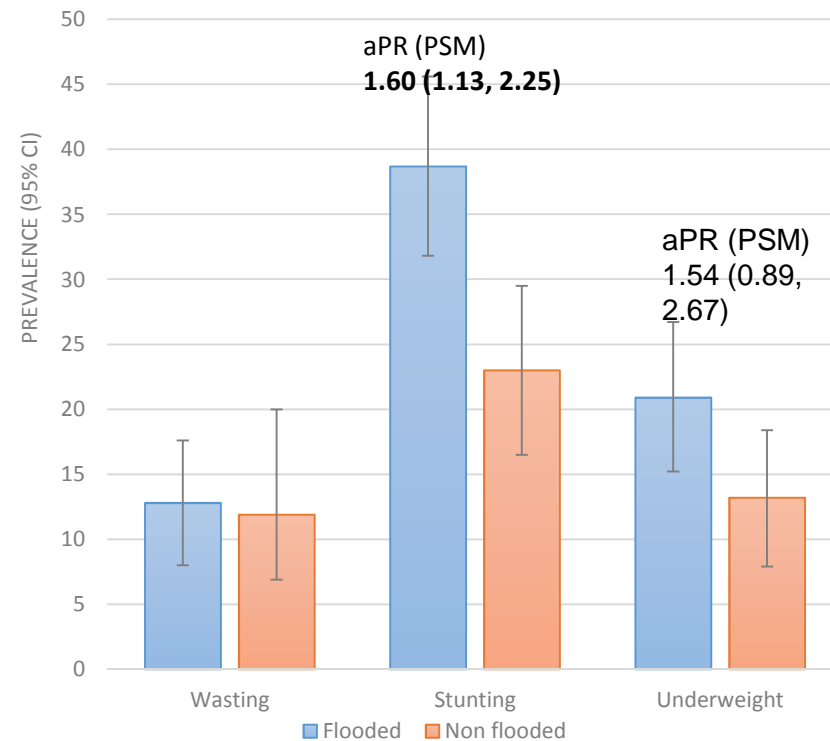
People affected by conflict refugees, internally displaced and residents (2012)



Flooding and long term effects on child growth

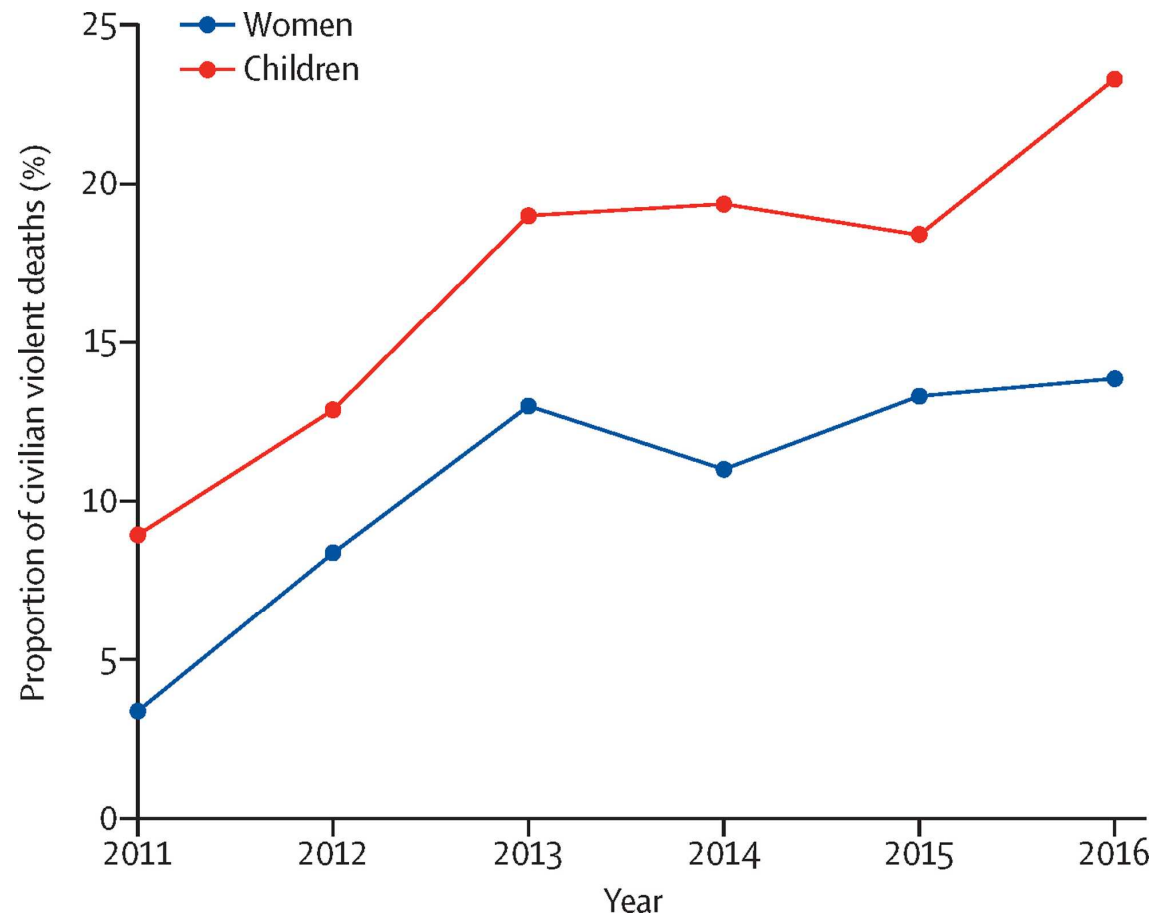
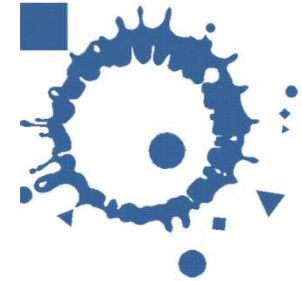


Propensity score matched for age, sex, bw, water, vaccination, income, caste, religion,

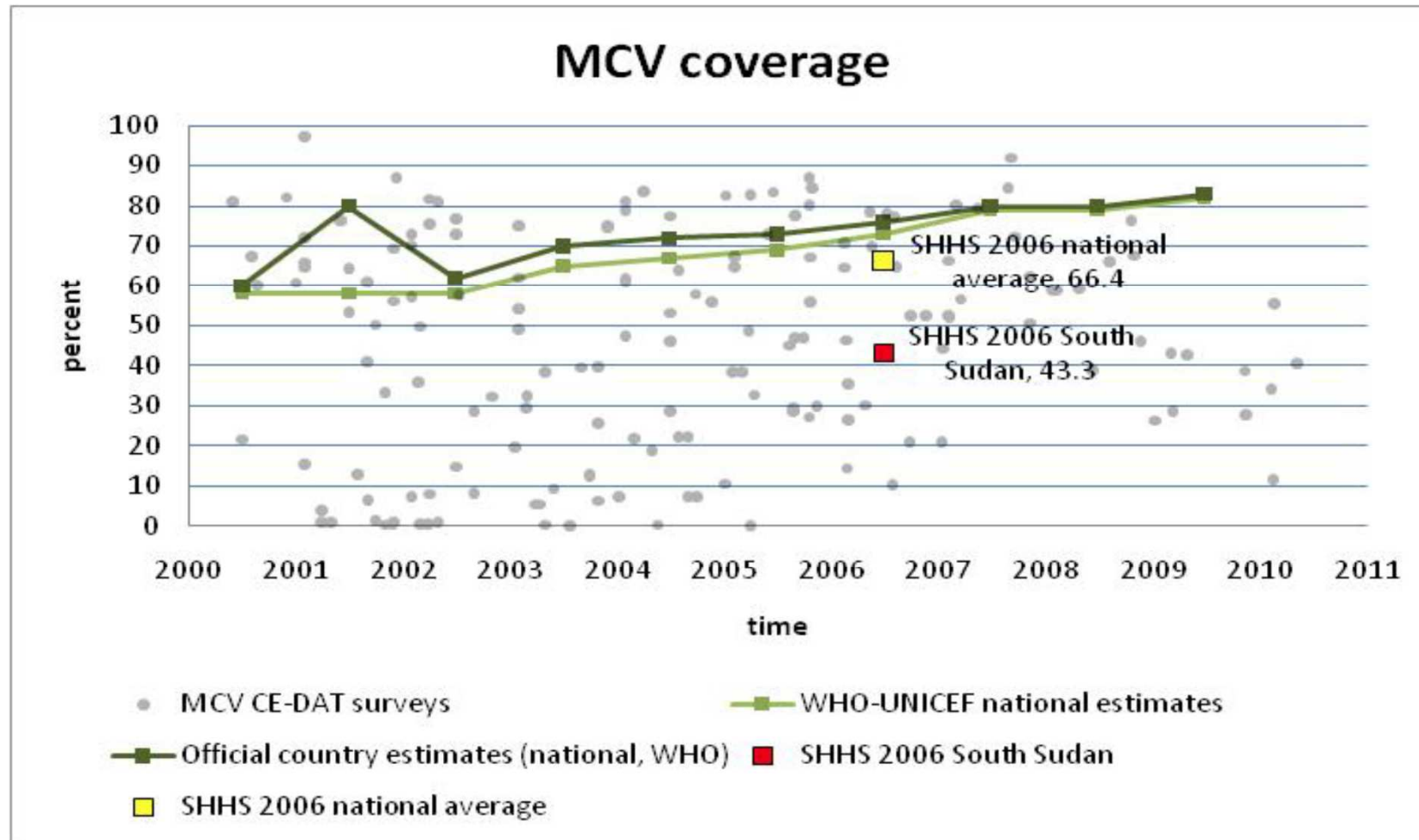


J. Llanes Rodriguez, S. Das D. Guha-Sapir, British Medical Journal, 2011

Evidence from weapon deaths in Syria: Mortality risk for child deaths 5x higher from aerial bombing

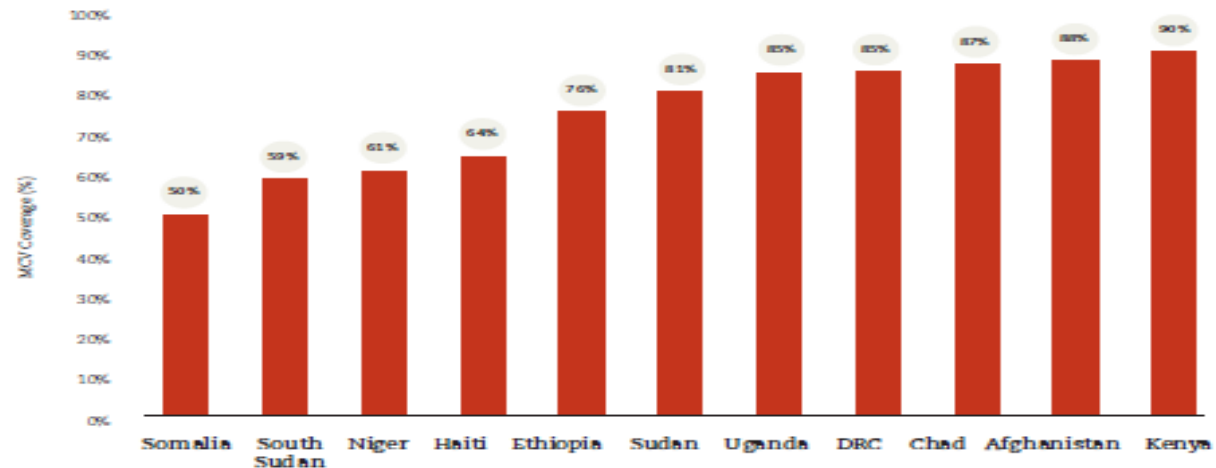


The Lancet, 2017

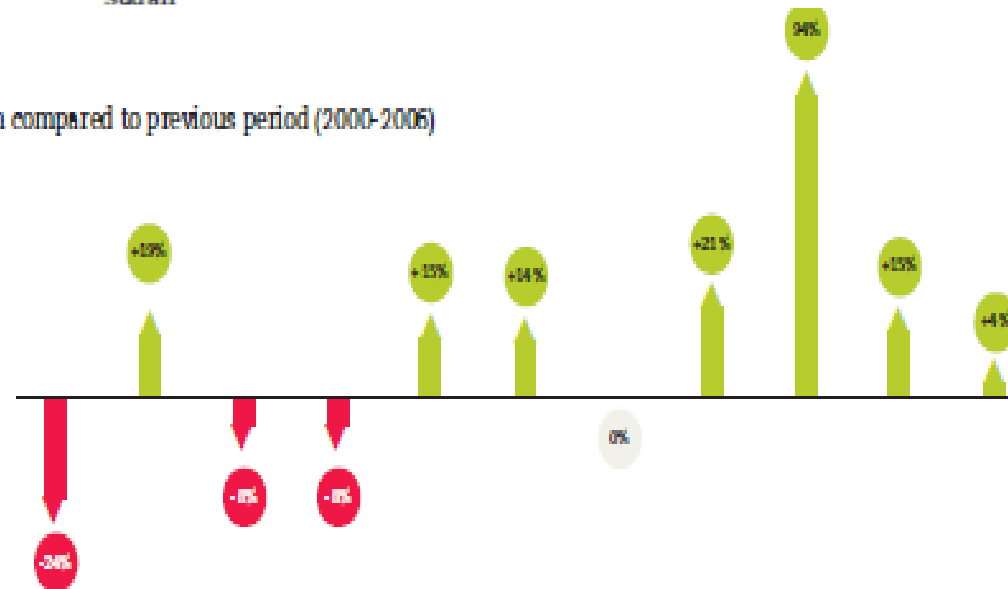


Health data in civil conflicts: South Sudan under scrutiny, Vogt, Heudtlass, Guha-Sapir, CREED Working Paper 282 Brussels, July 2011

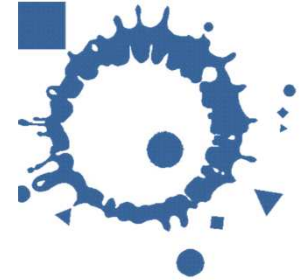
Measles vaccine coverage among children in conflict zones: 2007 – 2012 (source: CEDAT Database, CRED)



Evolution compared to previous period (2000-2006)



THANK YOU



IN GOD WE TRUST

ALL OTHERS MUST BRING DATA

STATISTICAL REPORTS AND DATABASES AVAILABLE ON WWW.CRED.BE

Contact: regina.below@uclouvain.be
